

# CASCOS

LIFTING PROFESSIONALS



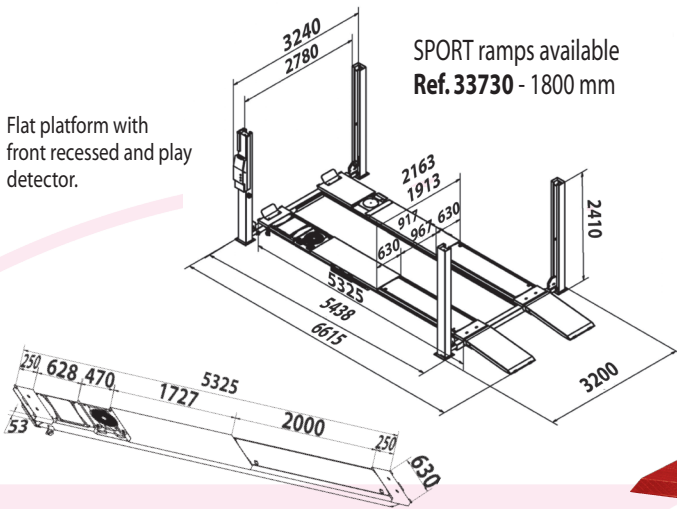
## 4 POST LIFTS



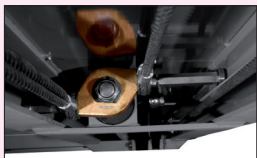
# C455 MOT ATL

Type	Ref.	Min	kg			
Alignment platform with play detector	13354A	185 mm	5Tn	1600 Kg.	230-400V/3ph/50Hz/3kW 230V/1ph/50Hz/2,2kW	40"

Flat platform with front recessed and play detector.



SPORT ramps available  
Ref. 33730 - 1800 mm

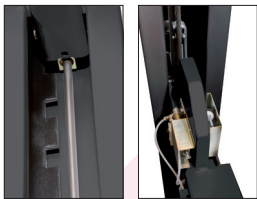


### Security indicator

**Indicator** that prevents a bad levelling, and ensures that the cylinder works within the best conditions assuring a **longer lasting life**.



**Hydraulic cylinders** produced and tested one by one in our factory. The cylinders count with the **security valves that detects** any lack of oil, closing the circuit and preventing the lift from the descending.

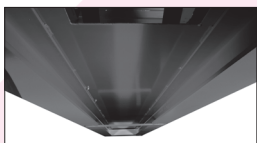


### Security x2

Double security system in each post :

- **Mechanical** (safety bars)
- **Pneumatic** (security ladders)

Ensures a better reliability than the electromagnetic security system.

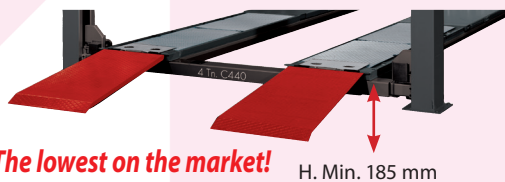


### Our platforms are built with:

Reinforced super structure by double T steel beams for intensive use, keeping the platform flat/straight over the years.

### Minimal height

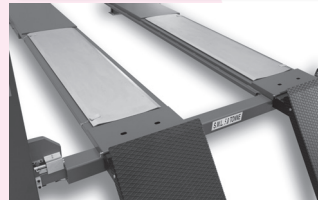
Our platforms descend almost to the ground level avoiding the use of bulky run-up ramps to allow sport cars to go in (and consequently, using less garage area).



**The lowest on the market!**

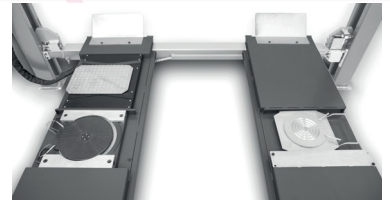
H. Min. 185 mm

### Alignment



Alignment plates with the new **sliding bearings system**:

- More comfortable and sensitive to alignment.
- Manual lock in the center of the platform.



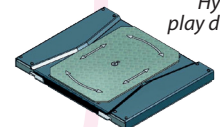
Recesses ready for alignment plates and / or turning plates 50 mm height. The lift includes Steel spacers for smaller turning plates.



Picture model C 442 (alignment)

### VERSIONS WITH PLAY DETECTOR INTEGRATED

Lift includes play detector listed on VOSA accepted equipment, securely integrated on the platform designed with recesses to integrate turning plates and fix them in line with VOSA requirements.



Hydraulic play detector

### Repairable during at least 10 years.

We ensure spare parts availability during at least this period.



2006/42/CE & EN - 1493:2011  
European Directives & Approved Standards



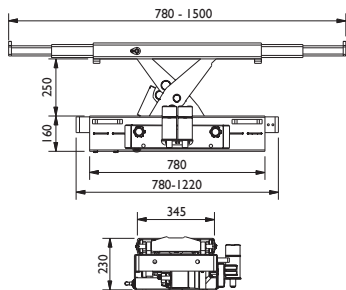
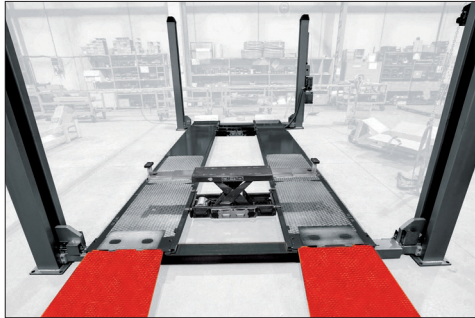
Ref. 13354A

# 4 POST LIFTS C455 MOT ATL

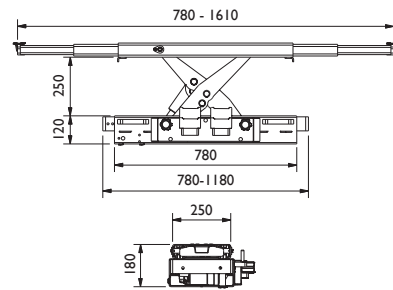
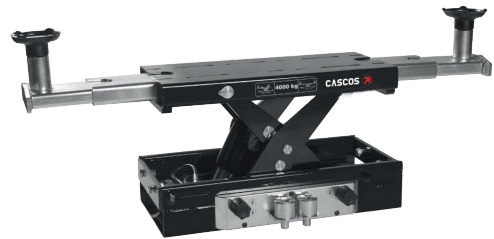
## OPTIONAL EQUIPMENT

### Oleopneumatic Jacks

4 Tn



2 - 2,6 Tn



	Without lip	With lip
Capacity	Ref	Ref
2 Tn	50515	50514
2,6 Tn	50517	50516
4 Tn	50565	50552

### Accesorios

Magnetic lighting kit

LED 24 V  
Without installation

Ref.: 34053

Top Covers

Ref.: 32129

Magnetic holder for tools

Ref.: 26141

Additional buttoning column opposite

Ref.: 32160  
32170

Magnetic air Kit

Ref.: 26177

Sport ramps kit

Ref.: 33730

Integrated power plug Assembled in factory

Ref.: 22164

www.cascos.es



**CASCOS**

**CASCOS MAQUINARIA, S.A.**

Zurrupitieta, 8 - Pol. Ind. Jándiz • Apartado 264  
01015 VITORIA-GASTEIZ / España/Spain  
Tel. +34 945 290 294 / Fax +34 945 290 055  
e-mail: info@cascos.es

THE PLANS AND PHOTOGRAPHS SHOWN IN THIS BROCHURE ARE FOR ILLUSTRATIVE PURPOSES ONLY, AND CM RESERVES THE RIGHT FROM TIME TO TIME TO MAKE MODIFICATIONS.