



KPX32

The geometry of the arms has been designed to lift from micro-cars to long wheel base sedan.

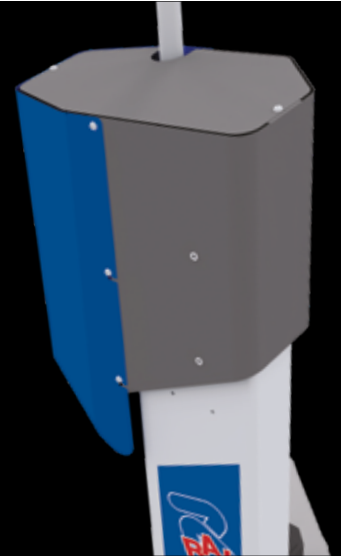

3.2





KPX35

The geometry of the arms has been designed to lift from micro-cars to long wheel base medium vans.


3.5






Controlled up/down by pushing button positioned at an ergonomic height.



Easy door opening
The vehicle can be placed backward without any worries about damaging the vehicle itself.



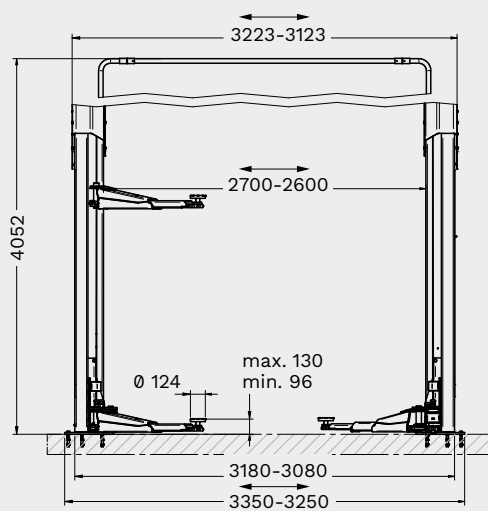
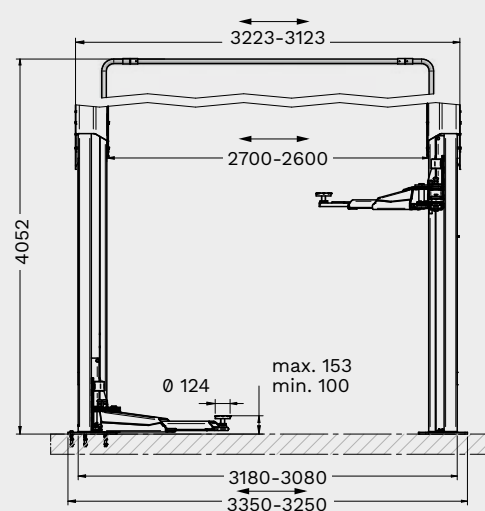
Thanks to the **asymmetric** design of the columns, the loading areas of the arms overlap, granting great **flexibility** and **time saving** when picking up the vehicle.


Rotated electromechanical lift featuring columns at 45°.


More room for moving around
The lift is designed to have the same total width as the standard lift but with a greater drive through.


Quick car positioning
The operator has at his disposal a wide loading area, without the necessity of pushing and pulling the vehicle to find the right lifting position.

Technical Data

KPX32

KPX35


	KPX32	KPX35
Capacity	3200 kg	3500 kg
Max. lifting height	2000 mm	2000 mm
Lifting time	42 s	42 s
Min. pad height	96 mm	100 mm
Max. pad height	130 mm	150 mm
Column height	3223 mm	3223 mm
Drive-through width	2372-2472 mm	2372-2472 mm
Min. ceiling height	4150 mm	4150 mm
Arm layout	asymmetrical	
Min. front arm length	555 mm	564 mm
Max. front arm length	1100 mm	1160 mm
Min. rear arm length	805 mm	922 mm
Max. rear arm length	1200 mm	1460 mm
Driving power	2x2.6 kW	2x3.5 kW
Width	3250-3350 mm	3250-3350 mm
Height	4052 mm	4052 mm

Item no.	Control	Energy kit	TEq-Link
RAV.KPX32.198570	switch		
RAV.KPX32.198624	push buttons	✓	✓
RAV.KPX35.199010	push buttons		✓
RAV.KPX35.199157	push buttons	✓	✓